

The Townhouses 1-5

1742 sqft

Ground Floor

Home 1

Utility Room	2885 mm x 2947 mm	9'6" x 9'8"
--------------	-------------------	-------------

First Floor

Home 1

Living Room	5113 mm x 3163 mm	16'9" x 10'5"
Dining	3364 mm x 2796 mm	11'10" x 9'2"
Kitchen	2947 mm x 5113 mm	9'8" x 16'9"

Second Floor

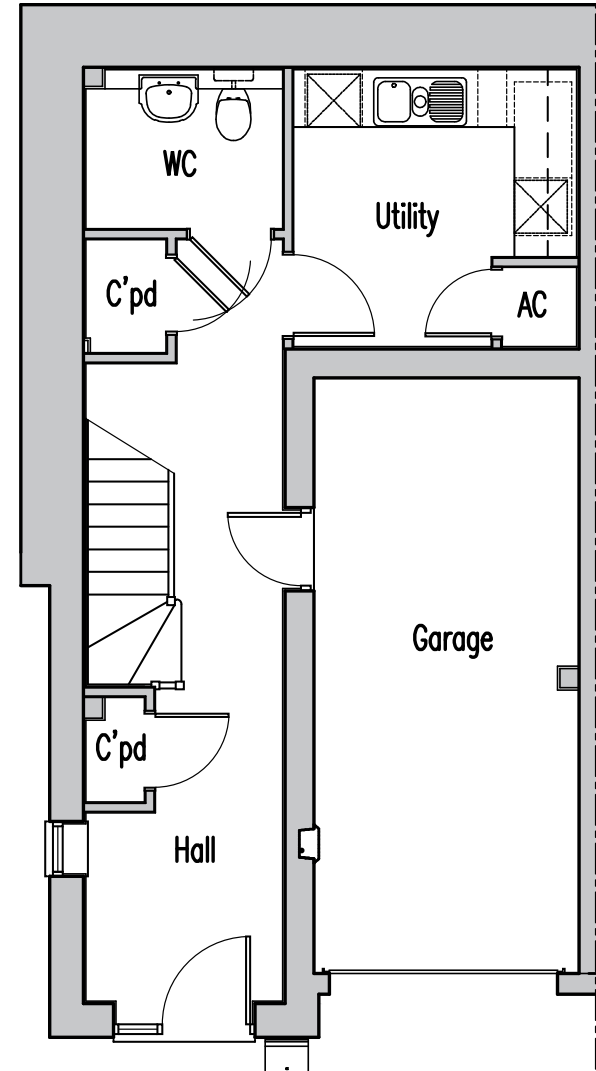
Home 1

Home Office	3163 mm x 2203 mm	10'5" x 7'3"
Bedroom 2	3791 mm x 3372 mm	12'5" x 11'1"
Bedroom 3	2796 mm x 4143 mm	9'2" x 13'7"

Third Floor

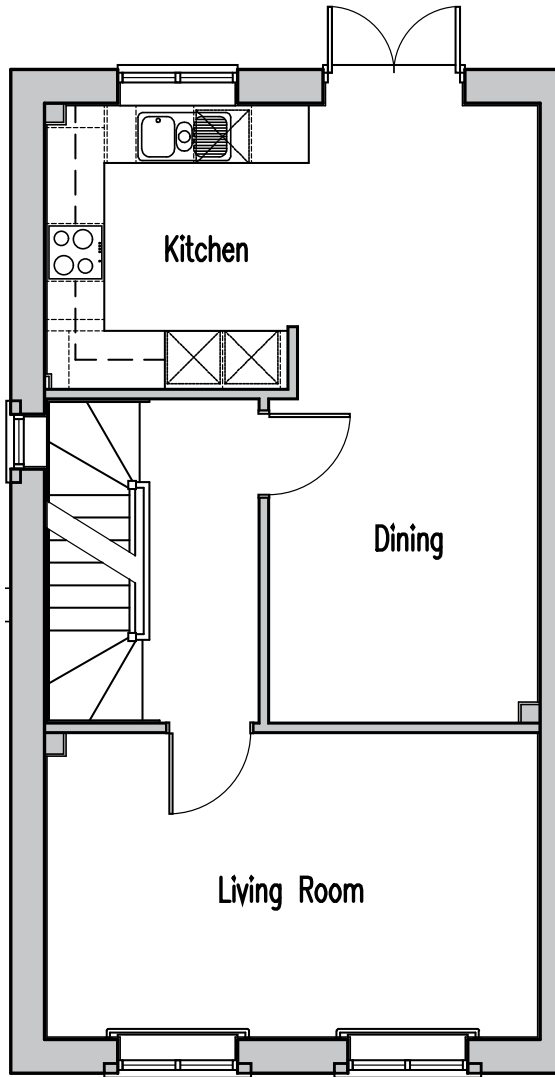
Home 1

Bedroom 1	3890 mm x 4080 mm	12'9" x 13'5"
-----------	-------------------	---------------



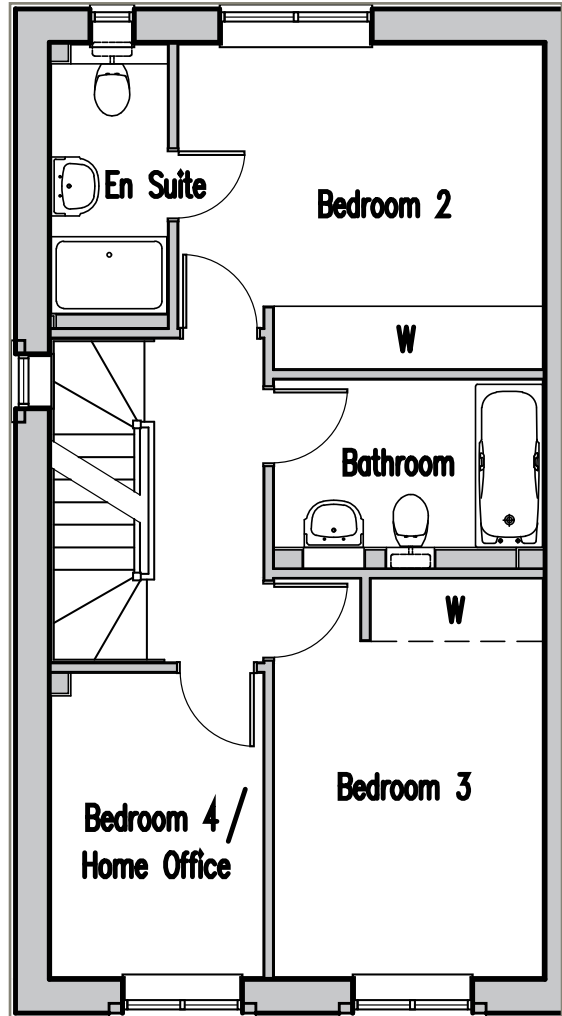
Ground Floor

Homes 1, 3 & 5 as shown, 2 & 4 handed



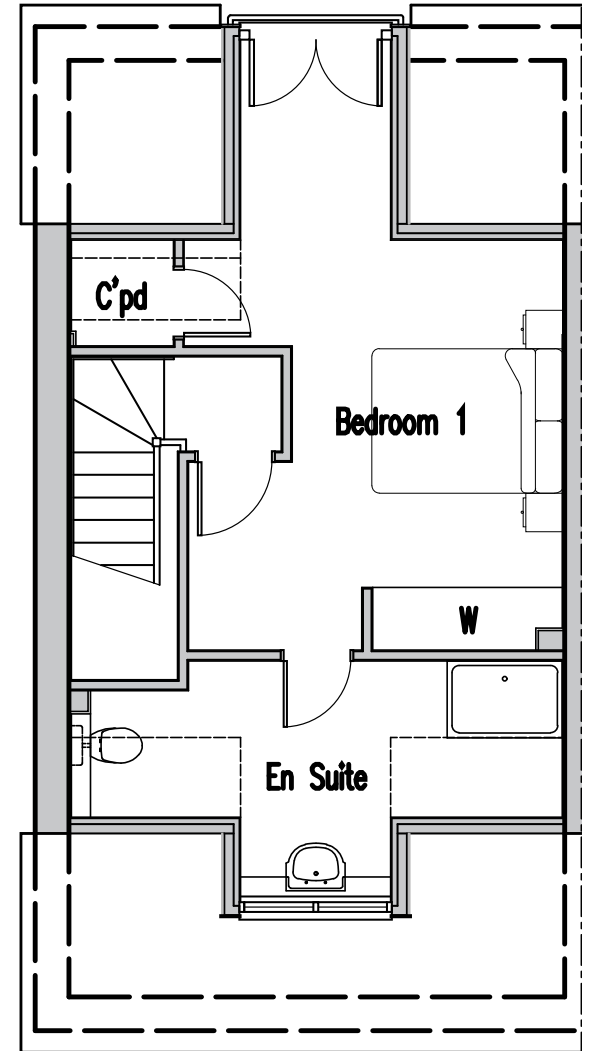
First Floor

Homes 1, 3 & 5 as shown, 2 & 4 handed



Second Floor

Homes 1, 3 & 5 as shown, 2 & 4 handed



Third Floor

Homes 1, 3 & 5 as shown, 2 & 4 handed